



Week 3



Forward your USF

Here are the steps y
USF server:

This tutorial will show you how to submit papers through Blackboard. In my course, you enter the class in the Assignments section of Blackboard. For the first assignment, you go to the week. (Click "Next" to continue.)



USF e-mail instead of reading it from the relevant

1. go to una.acomp.usf.edu (the link above)
2. log in with your MyUSF username and password
3. click on the mail link (in the left-margin ribbon)
4. go to the "Edit mail account options" link (on the right, towards the top, in ugly pale green)
5. scroll down to the "Optional" box
6. fill in the forwarding options box

Neither I nor USF is responsible for problems you have on your off-campus mail server. For that matter, I am probably not responsible if your on-campus server inbox become so full that the server refuses my mail. The e-mail forwarding option is available for your convenience. You are still responsible for checking e-mail regularly, since I will be sending class communications to your officially-listed USF e-mail address.



Week 3



Forward your USF e-mail!

Here are the steps you need to follow if you choose to forward your USF e-mail instead of reading it from the relevant USF server:

1. go to una.acomp.usf.edu (the link above)
2. log in with your MyUSF username and password
3. click on the mail link (in the left-margin ribbon)
4. go to the "Edit mail account options" link (on the right, towards the top, in ugly pale green)
5. scroll down to the "Optional" box
6. fill in the forwarding options box

Neither I nor USF is responsible for problems you have on your off-campus mail server. For that matter, I am probably not responsible if your on-campus server inbox become so full that the server refuses my mail. The e-mail forwarding option is available for your convenience. You are still responsible for checking e-mail regularly, since I will be sending class communications to your officially-listed USF e-mail address.

- Announcements
- Assignments
- Class Discussions
- Communications
- Course Documents
- Work Groups
- Grades and Stuff
- Course Map
- Control Panel



Bowles and Becker module

Click here to enter the module



Plagiarism

This unit is about plagiarism. Yes, I require all my students to complete an assignment or two about plagiarism.



Ordinary evidence

Describe the circumstances of an adult over 30 you know and how that person's life matches up against either Bowles' or Becker's article. Please write up to 600 words in a regular word-processing file and upload through Blackboard. A few notes:

- Please do **not** paste the essay into the **Comments** box below.
- Please **do** include source references (citations) as appropriate (including to course readings!)
- Please **do** discuss the chosen article (either Bowles or Becker) explicitly and make a clear statement of how well your chosen adult's life matches up against Bowles or Becker.

I look forward to reading your paper!

>> [View/Complete](#)

Announcements
Assignments
Class Discussions
Communications
Course Documents
Work Groups
Grades and Stuff

Course Map
Control Panel



Plagiarism

This unit is about plagiarism. Yes, I require all my students to complete an assignment or two about plagiarism.



Ordinary evidence

Describe the circumstances of an adult over 30 you know and how that person's life matches up against either Bowles' or Becker's article. Please write up to 600 words in a regular word-processing file and upload through Blackboard. A few notes:

- Please do **not** paste the essay into the **Comments** box below.
- Please **do** include source references (citations) as appropriate (including to course readings!)
- Please **do** discuss the chosen article (either Bowles or Becker) explicitly and make a clear statement of how well your chosen adult's life matches up against Bowles or Becker.

I look forward to reading your paper!

>> [View/Complete](#)



Coontz 5-item quiz



Syllabus 5-item quiz



Plagiarism

This unit is about plagiarism. Yes, I require all my students to complete an assignment or two about plagiarism.



Ordinary evidence

Describe the circumstances of an adult over 30 you know and how that person's life matches up against either Bowles' or Becker's article. Please write up to 600 words in a regular word-processing file and upload through Blackboard. A few notes:

- Please do **not** paste the essay into the **Comments** box below.
- Please **do** include source references (citations) as appropriate (including to course readings!)
- Please **do** discuss the chosen article (either Bowles or Becker) explicitly and make a clear statement of how well your chosen adult's life matches up against Bowles or Becker.

I look forward to reading your paper!

>> [View/Complete](#)

In Blackboard, you will click "View/Complete" to start uploading your paper. (In this tutorial, click "Next.")

[Back](#) [Next](#)



Coontz 5-item quiz



Syllabus 5-item quiz

Upload Assignment: Ordinary evidence

1 Assignment Information

Name Ordinary evidence

Instructions Describe the circumstances of an adult over 30 you know and how that person's life matches up against either Bowles' or Becker's article. Please write up to 600 words in a regular word-processing file and upload through Blackboard. A few notes:

- Please do **not** paste the essay into the **Comments** box below.
- Please **do** include source references (citations) as appropriate (including to course readings!)
- Please **do** discuss the chosen article (either Bowles or Becker) explicitly and make a clear statement of how well your chosen adult's life matches up against Bowles or Becker.

I look forward to reading your paper!

2 Assignment Materials

Comments



- Announcements
- Assignments
- Class Discussions
- Communications
- Course Documents
- Work Groups
- Grades and Stuff
- Course Map
- Control Panel

- ◆ Please **do** discuss the chosen article (either Bowles or Becker) explicitly and make a clear statement of how well your chosen adult's life matches up against Bowles or Becker.

I look forward to reading your paper!

2 Assignment Materials

Comments

Here, you see the uploading page. Blackboard has a quirk that you need to fill in "something" in the "Comments" box, so I ask that you fill in your name. (DO NOT WRITE YOUR PAPER IN THIS BOX!)

[Back](#) [Next](#)

File To Attach

Currently Attached Files:

- Please **do** discuss the chosen article (either Bowles or Becker) explicitly and make a clear statement of how well your chosen adult's life matches up against Bowles or Becker.

I look forward to reading your paper!

2 Assignment Materials

Comments

I

File To Attach

Currently Attached Files:



- ◆ Please **do** discuss the chosen article (either Bowles or Becker) explicitly and make a clear statement of how well your chosen adult's life matches up against Bowles or Becker.

I look forward to reading your paper!

2 Assignment Materials

Comments

Your name

File To Attach

Currently Attached Files:



- Please **do** discuss the chosen article (either Bowles or Becker) explicitly and make a clear statement of how well your chosen adult's life matches up against Bowles or Becker.

I look forward to reading your paper!

2 Assignment Materials

Comments

Your name here.

File To Attach

Currently Attached Files:



- Please **do** discuss the chosen article (either Bowles or Becker) explicitly and make a clear statement of how well your chosen adult's life matches up against Bowles or Becker.

I look forward to reading your paper!

2 Assignment Materials

Comments

Your name here.

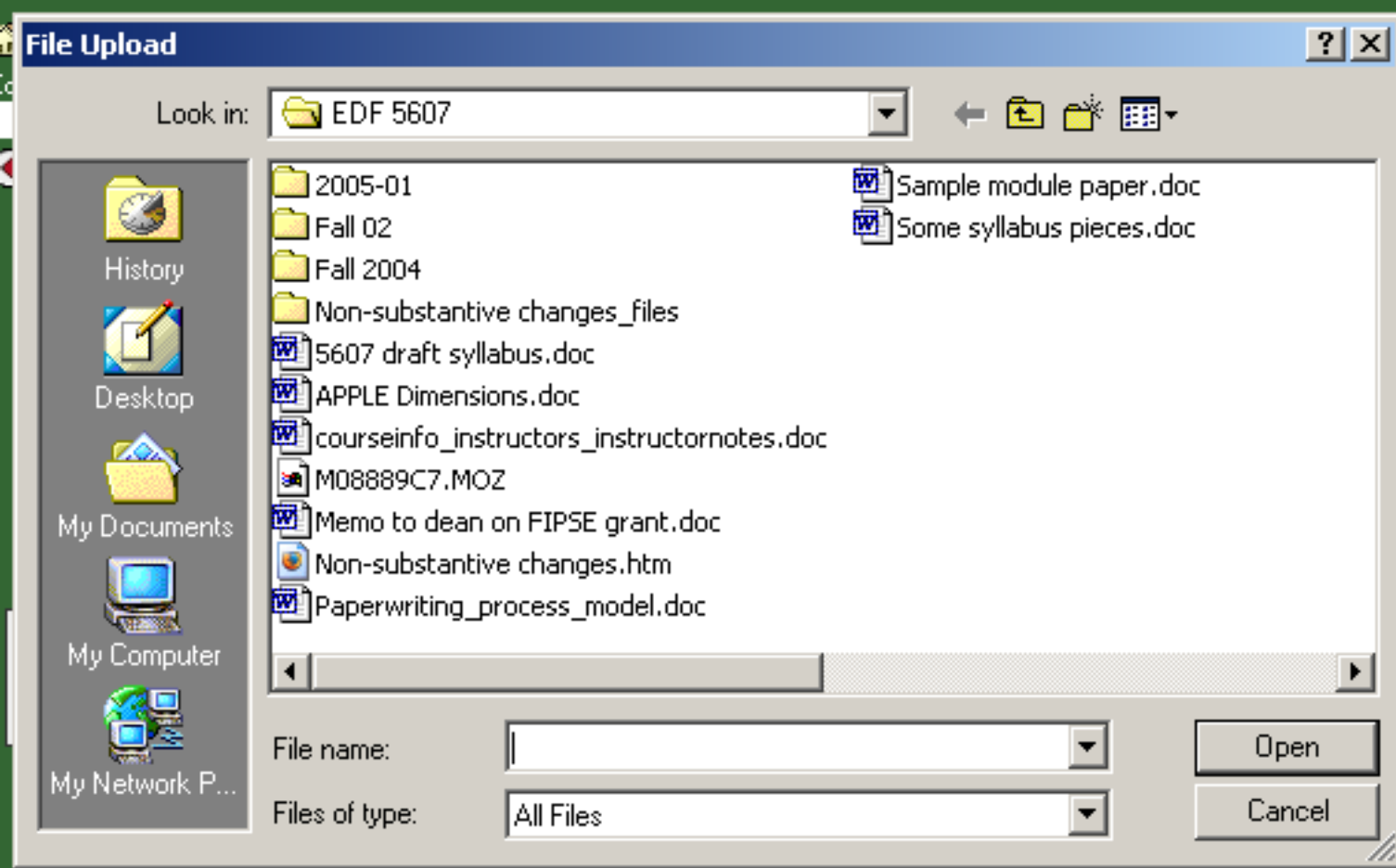
Now -- and here is the REALLY important part -- you click the "Browse" button and find your paper. You should have ONLY ONE document, please (make sure the references are in the paper file itself).

[Back](#) [Next](#)

File To Attach

[Browse...](#) [Add Another File](#)

Currently Attached Files:



Organizations

USF Libraries

Services & Resource

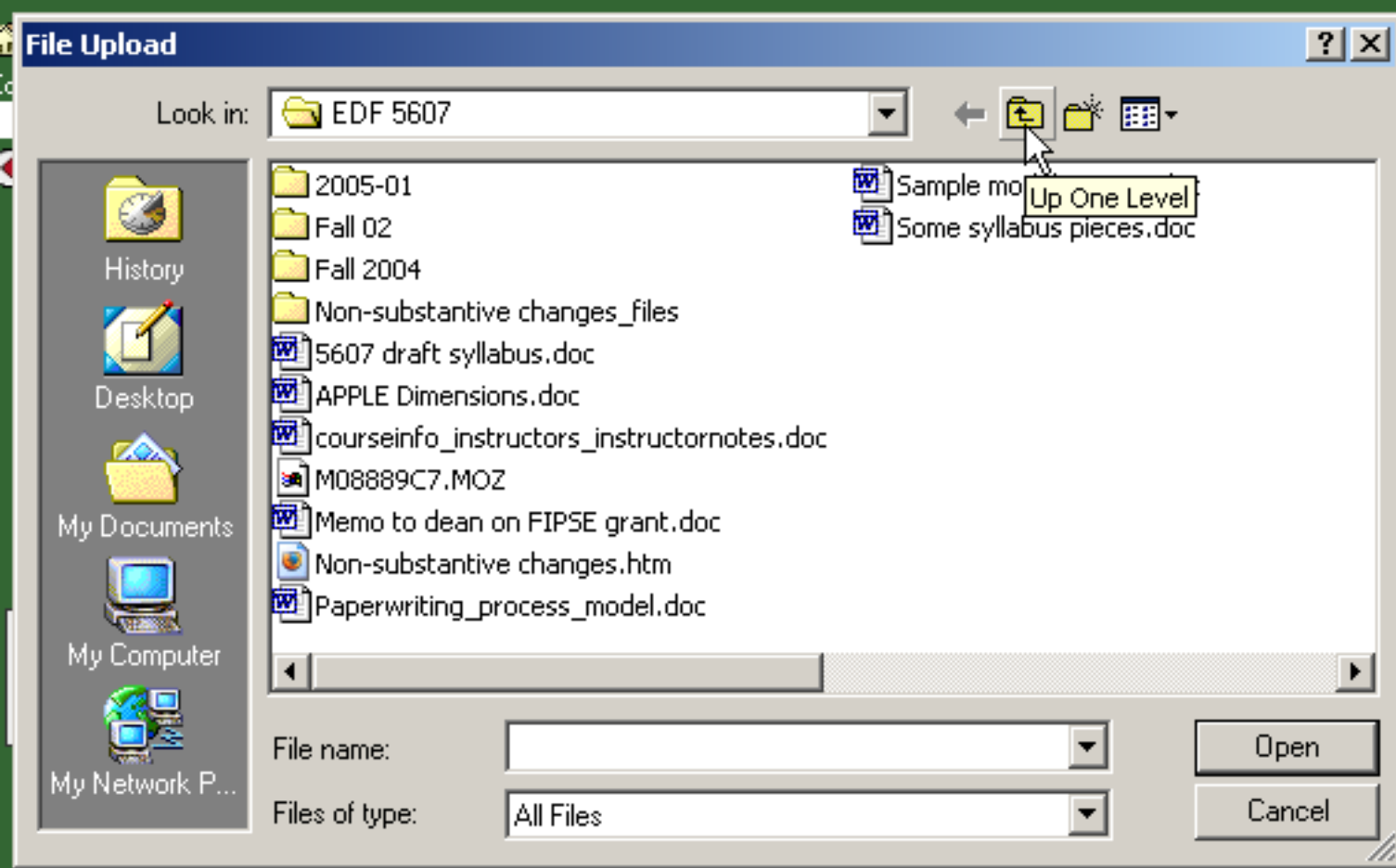
either Bowles or Becker) explicitly and make a clear
dult's life matches up against Bowles or Becker.

File To Attach

Browse...

Add Another File

Currently Attached Files:



Organizations

USF Libraries

Services & Resources

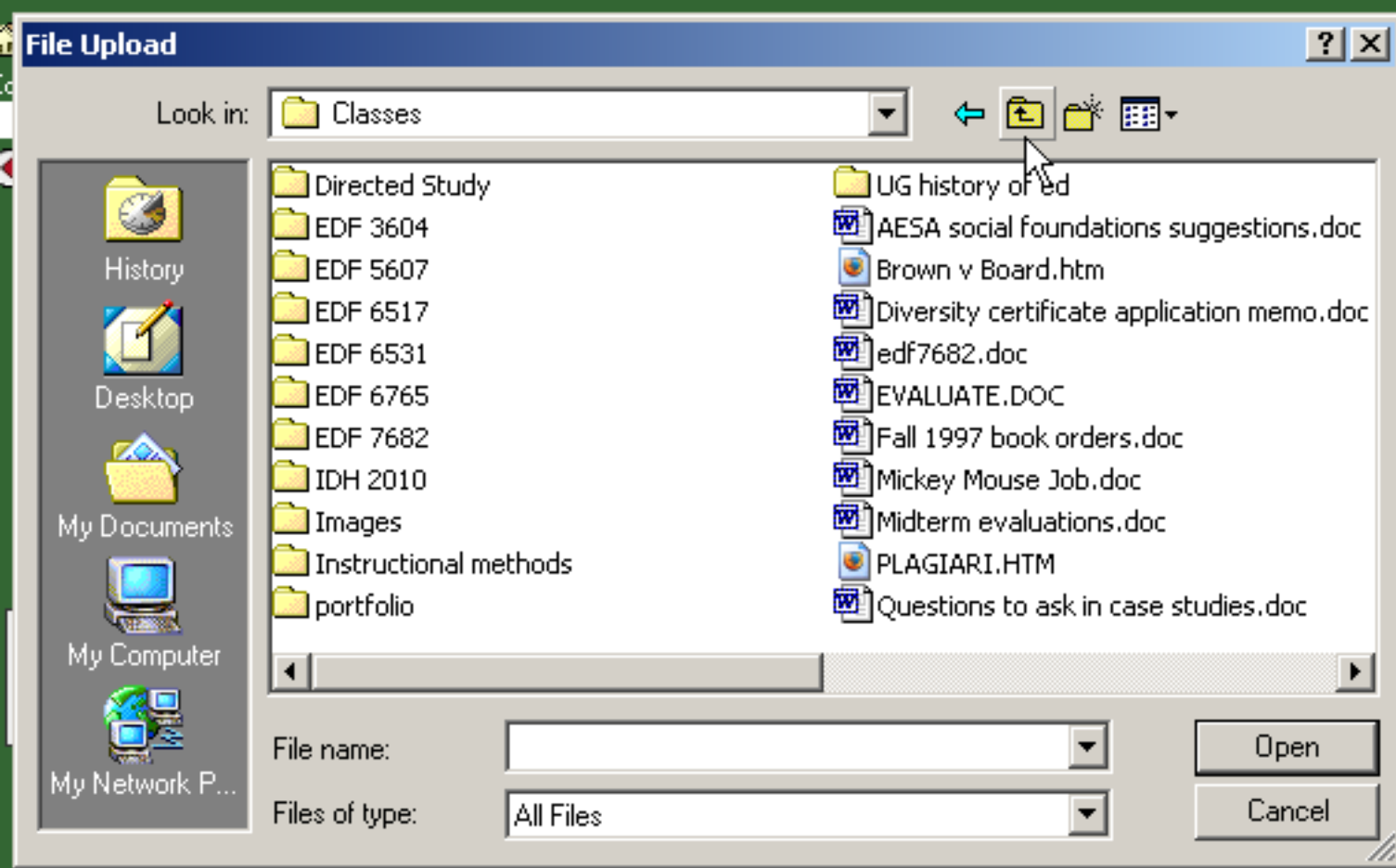
either Bowles or Becker) explicitly and make a clear
adult's life matches up against Bowles or Becker.

File To Attach

Browse...

Add Another File

Currently Attached Files:



Organizations

USF Libraries

Services & Resources

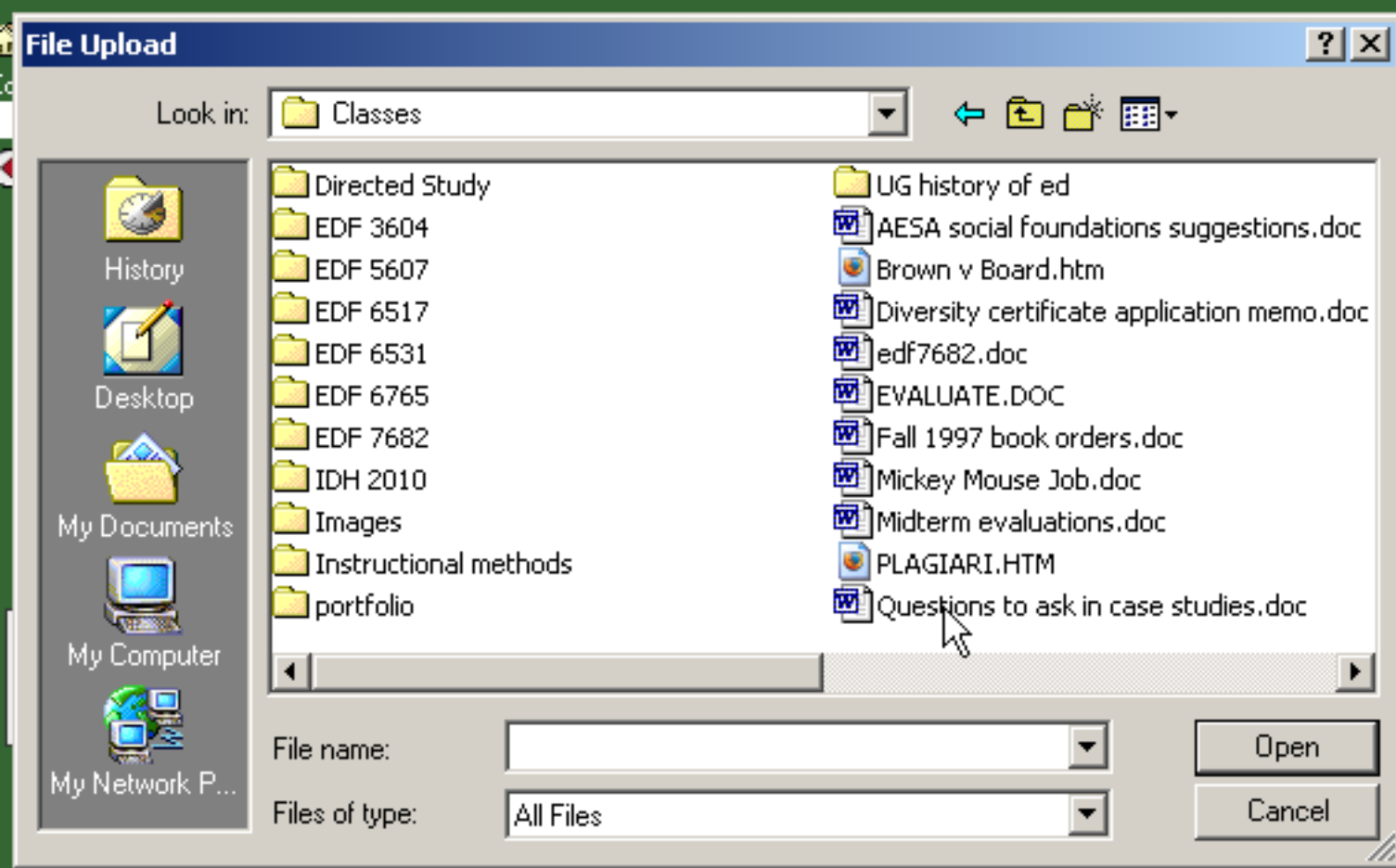
either Bowles or Becker) explicitly and make a clear adult's life matches up against Bowles or Becker.

File To Attach

Browse...

Add Another File

Currently Attached Files:



Organizations

USF Libraries

Services & Resource

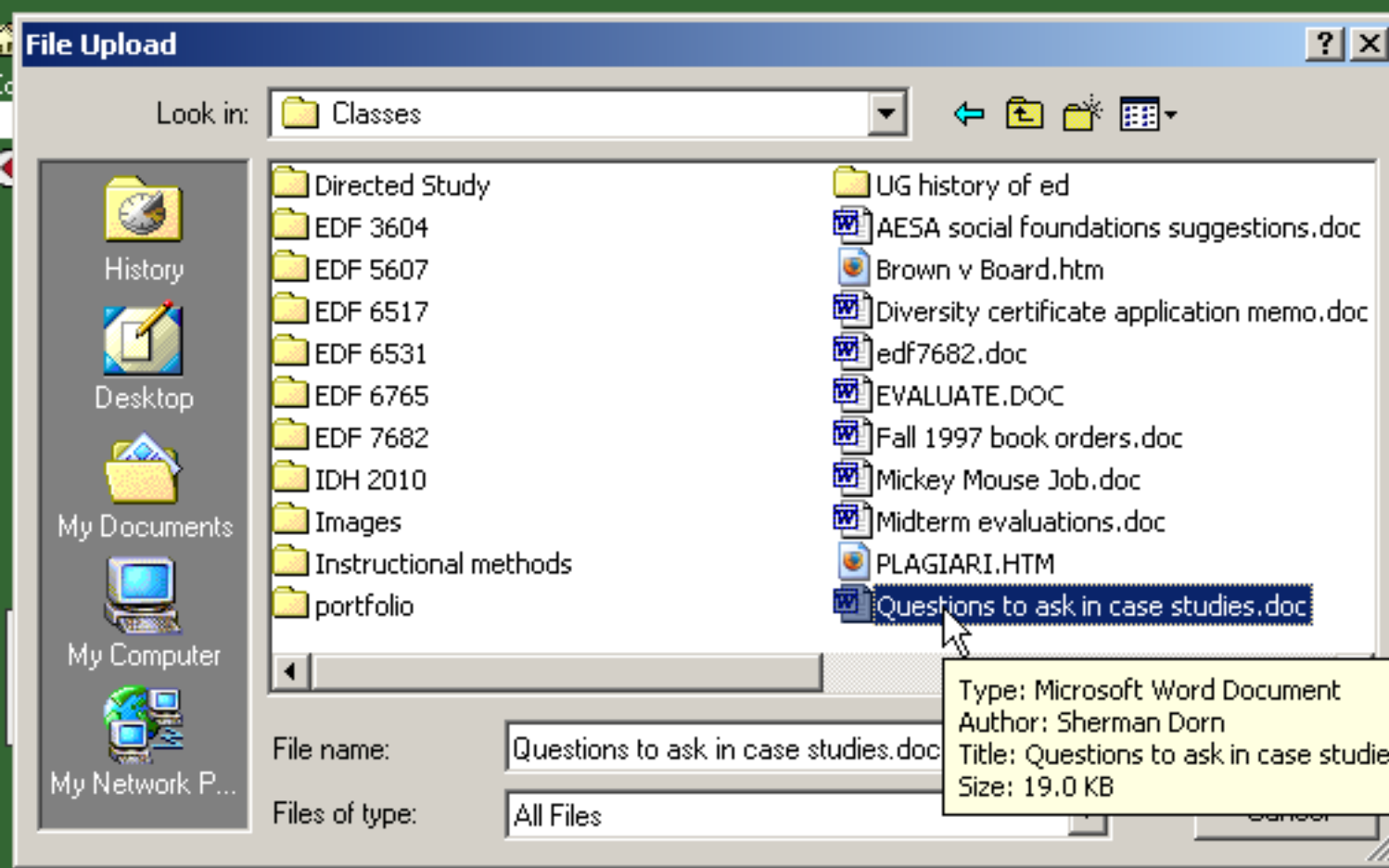
either Bowles or Becker) explicitly and make a clear adult's life matches up against Bowles or Becker.

File To Attach

Browse...

Add Another File

Currently Attached Files:



Organizations

USF Libraries

Services & Resources

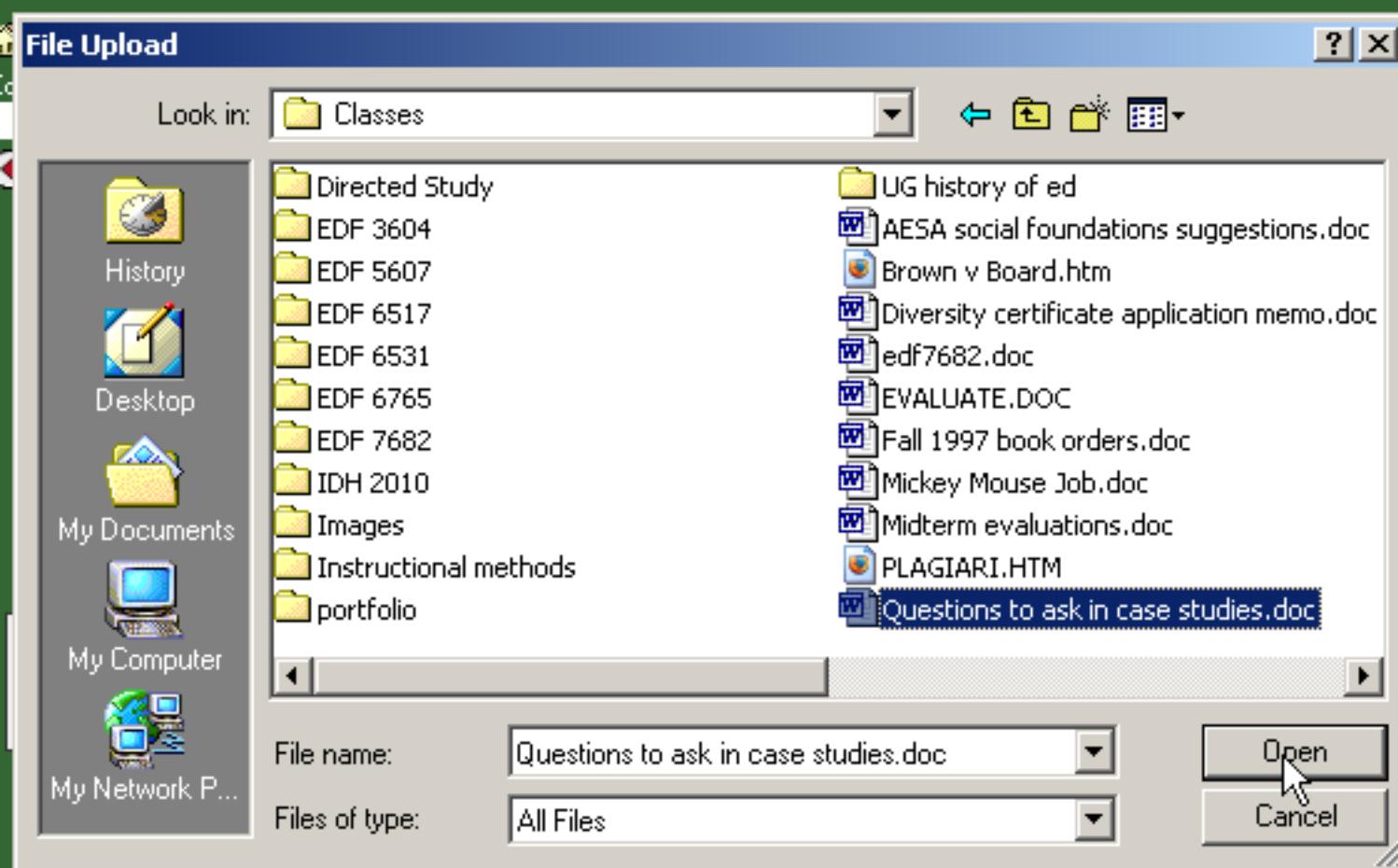
either Bowles or Becker) explicitly and make a clear adult's life matches up against Bowles or Becker.

File To Attach

Browse...

Add Another File

Currently Attached Files:



either Bowles or Becker) explicitly and make a clear
dult's life matches up against Bowles or Becker.

When you have selected the file with the paper, confirm the selection. (In Windows, it's "Open.")

[Back](#) [Next](#)

File To Attach

Currently Attached Files:

- Please **do** discuss the chosen article (either Bowles or Becker) explicitly and make a clear statement of how well your chosen adult's life matches up against Bowles or Becker.

I look forward to reading your paper!

2 Assignment Materials

Comments

Your name here.

I

File To Attach

C:\Documents and Settings\sdoor [Browse...] [Add Another File]

Currently Attached Files:

- Announcements
- Assignments
- Class Discussions
- Communications
- Course Documents
- Work Groups
- Grades and Stuff
- Course Map
- Control Panel

Comments

Your name here.

File To Attach

C:\Documents and Settings\sdoor

Currently Attached Files:

3 Submit

Click **Save** to stop working and continue working later. Click **Submit** to finish. Click **Cancel** to quit without saving changes.

- Announcements
- Assignments
- Class Discussions
- Communications
- Course Documents
- Work Groups
- Grades and Stuff

- Course Map
- Control Panel

Comments

Your name here.

File To Attach

C:\Documents and Settings\sdorr

Currently Attached Files:

3 Submit

Click **Save** to stop working and continue working later. Click **Submit** to finish. Click **Cancel** to discard changes.

Always make sure that you click the "Submit" button -- NOT THE "SAVE" BUTTON!!



- Announcements
- Assignments
- Class Discussions
- Communications
- Course Documents
- Work Groups
- Grades and Stuff

- Course Map
- Control Panel

[COURSES](#) > [EDF3604.001S05: SOCIAL FOUND OF EDUCATION](#) > [ASSIGNMENTS](#) > [WEEK 3](#) > UPLOAD ASSIGNMENT: ORDINARY EVIDENCE


Upload Assignment: Ordinary evidence

The assignment has been updated.

Friday, January 21, 2005 9:52:05 AM EST

You should see this screen after uploading your paper. You can only upload a paper once, so make sure that it is in the form you want it in -- WITH CITATIONS! -- before you submit the paper.

You may restart this tutorial by clicking the red arrow.



OK

